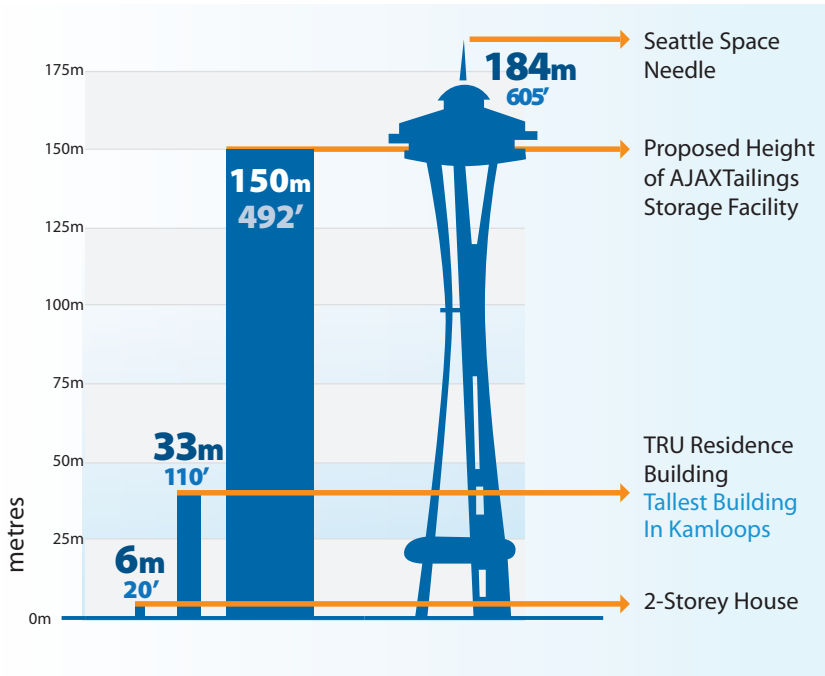
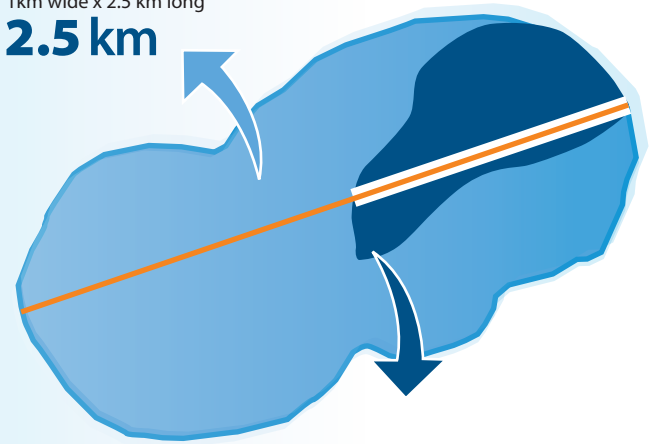


It's NOT a Done Deal!

Facts about AJAX



AJAX Open Pit
1km wide x 2.5 km long
2.5 km



1.2 km MacArthur Island
1.2km from MacKenzie Ave. entrance to opposite end

24 hours/day 7 days/week 365 days/year 23 years

1.5 km DISTANCE: nearest point in the proposed AJAX mine site to nearest housing development

1.9 km DISTANCE: Royal Inland Hospital to the Great Canadian Superstore (via Columbia St.)

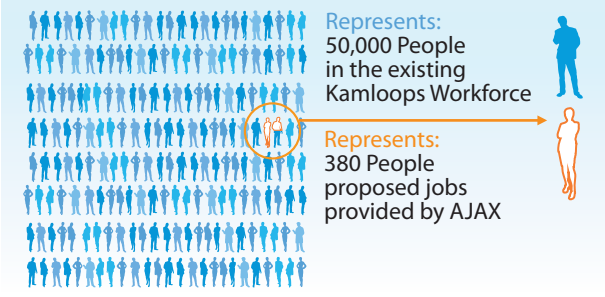
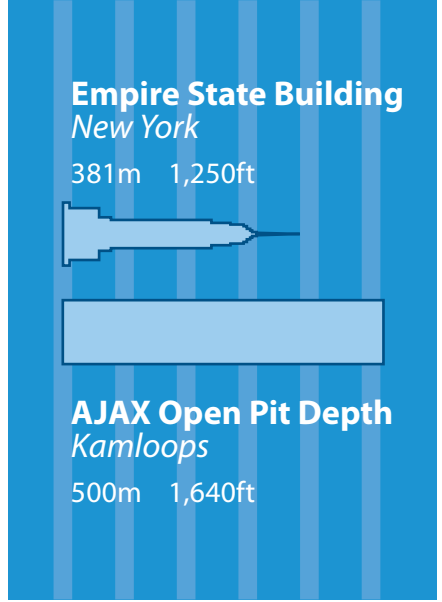
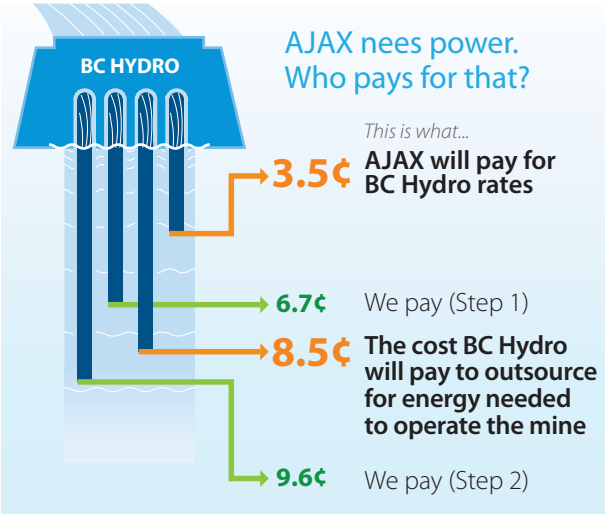
2.1 km DISTANCE: Overlander (Blue) Bridge to the Red Bridge (via Lorne St. and Victoria St.)

8 km DISTANCE: the ski run at Sun Peaks called the '5 Mile'

Ground Water Issues for Aberdeen Homes
Aberdeen residents are allowed 150 cubic metres of water usage PER YEAR to irrigate homes. The proposed AJAX mine will be using 1200 cubic metres PER HOUR.
How will this affect your ground water issues?

Asthma in Your Family
Do you know someone with asthma? Asthma is an illness where every breath counts.
How will the mine affect yours and their respiratory health? What about air quality?

Doctor Shortage
Kamloops has a serious problem with a shortage of doctors.
Have you asked if your doctor is staying in Kamloops if the mine proceeds? How will the mine help recruit doctors?



UPCOMING EVENTS

APRIL 25 7:00pm Wednesday
Aberdeen Community Association* at Plura Hills Church *Share your concerns All Aberdeen Residents Welcome!*

MAY 5 Walk For Peace *Info 250.377.0055*

THE FACTS ARE THE FACTS
Go to facebook.com/stopajaxmine

Sources available at: stopajaxmine.ca/sources

*Aberdeen Community Association is NOT affiliated with this publication or KAPA